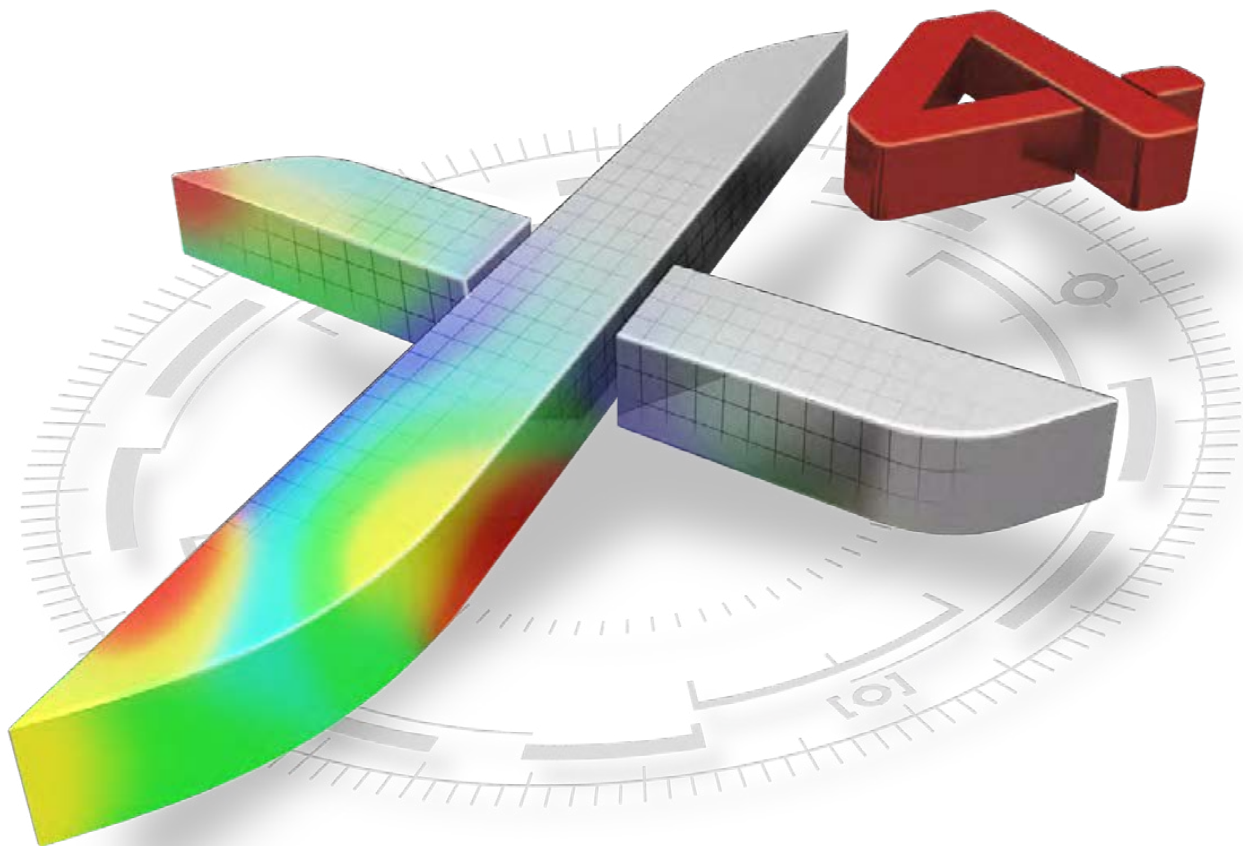


*The* Universal 3D Inspection Reference

# Metrolog<sup>X</sup>4



designed 4 the future



ANY DATA | ANY TECHNOLOGY | ANY APPLICATION



[www.metrologicgroup.com](http://www.metrologicgroup.com)

**metrologic<sup>®</sup>**  
group  
advanced 3D measurement software & solutions

# About the Company

*Optimize your quality processes,  
measure more efficiently, maximize  
your investments.*

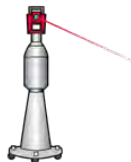
Metrologic Group has built a solid reputation for providing small and larger companies with the best 3D control software in the market. A combination of cutting-edge technology driven products and solutions coupled with the utmost level of customer service.

The new Metrolog X4 version is our most innovative/advanced measuring solution yet, resulting from over 35 years of expertise and aggressive R&D in the metrology industry. Companies in various sectors such as automotive, aerospace, tool manufacturing and mould making, machine building, energy and medicine have trusted us with their metrology needs, outperforming our competitors.



## An independent yet compatible solution.

Large Scale Metrology  
Uncertainty Bundle

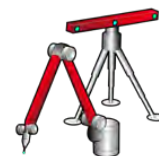


Universal



Virtual Offline  
Simulation & Programming

Point Cloud  
Acquisition & Inspection



Portable Metrology  
Multi-device

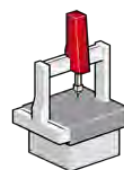
Robot Measurement  
Inline Automation



One single solution  
fitted to all your needs



GD&T Reporting  
Offline Analysis



CMM Retrofits  
Services & Calibration

Discover our online configurator  
giving you the choices for a software  
solution that best suits your needs:  
[www.metrologicgroup.com](http://www.metrologicgroup.com)

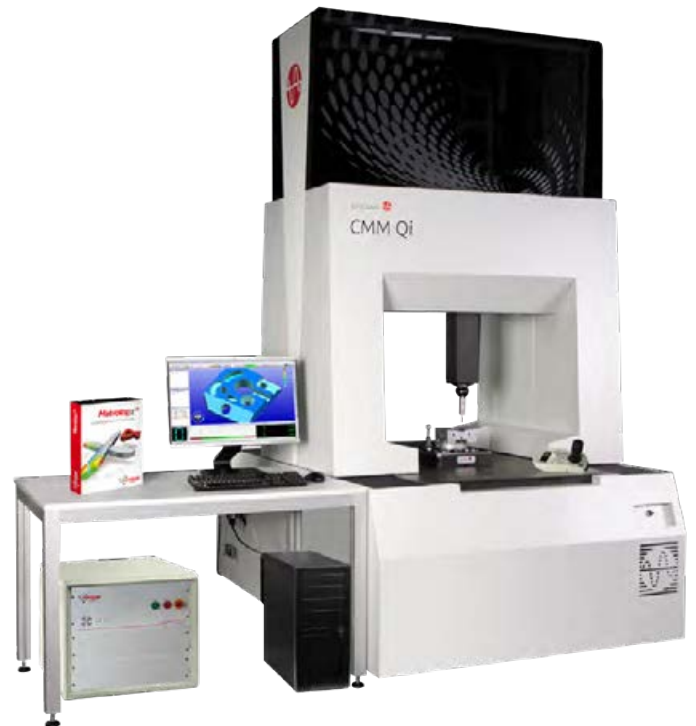


# Why change your measurement software?

## *Your current software solution:*

- Does not update regularly?
- Is only compatible with an obsolete computer system?
- Is not capable to work with large or complex CAD files?
- Does not provide the correct analysis and results understanding?
- Does not analyze geometric tolerances (GD&T)?
- Takes up too much operator time with program creation?
- Gives you trouble in the design and management of reports?
- Your inspection department is constantly overloaded and under-productive?

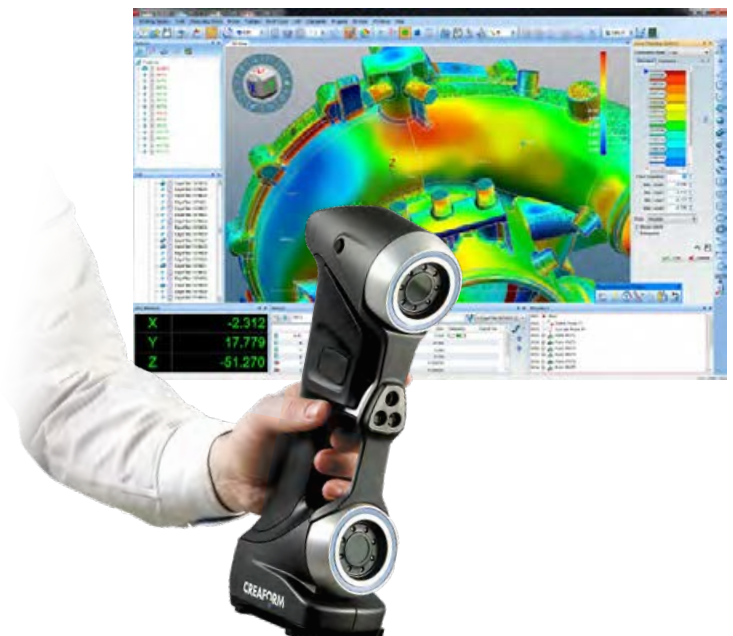
Metrolog X4 will lift all these limitations. Metrolog X4 is a stable solution with worldwide recognition that will deliver outstanding cost-effective and time-saving measuring capabilities.



*“Metrolog, the automotive and aerospace standard.”*

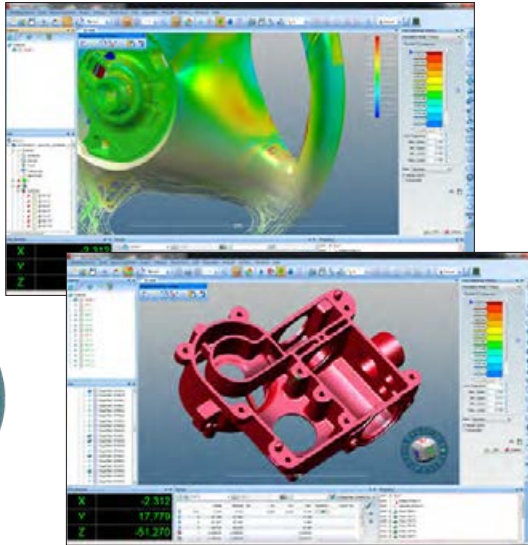
## *An enhanced interface for a smooth end-user experience.*

- Fully customizable user-friendly graphical interface to suit operators needs, machine types and measurement types.
- New manual probing wizard.
- Automatic view orientation during acquisition.
- Multiple information windows (position and results).
- Software readily available in 18 languages switchable on the fly.





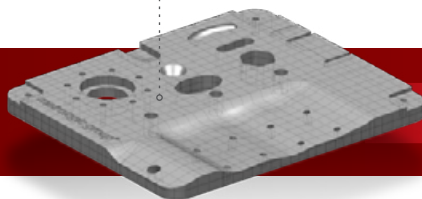
# Inspection Made Easy:



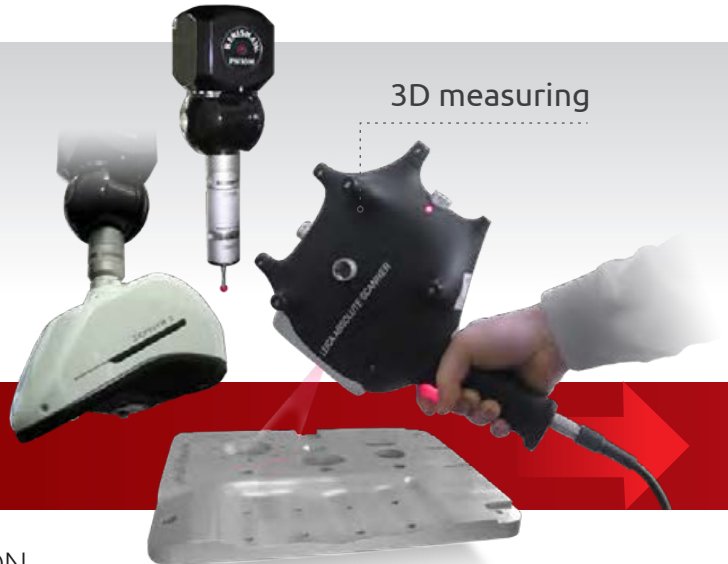
## *Maximum performance in the point cloud analysis.*

- Metrolog X4 is designed to process and analyze the largest and most dense point clouds.
- Metrolog X4 integrates the latest technology required for efficient optical measurement functions, ensuring that you have the best tool whatever the device you are using.
- Cloud comparison with CAD (Color Mapping).
- Element extraction and automated GD&T.
- Intuitive treatment of flush and gap.
- Measurement with compensation for material thickness.
- Part quality estimation according to the surface mm<sup>2</sup> (area calculation).

CAD data



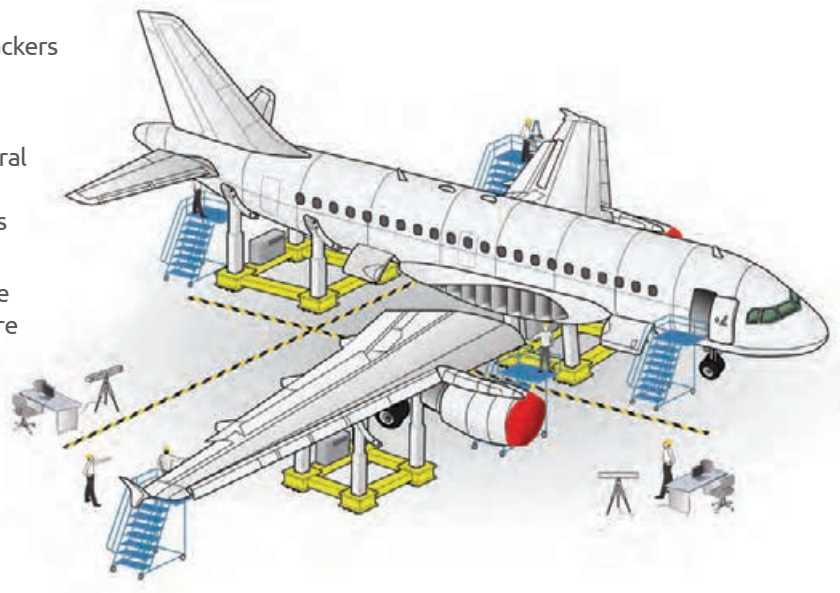
3D measuring



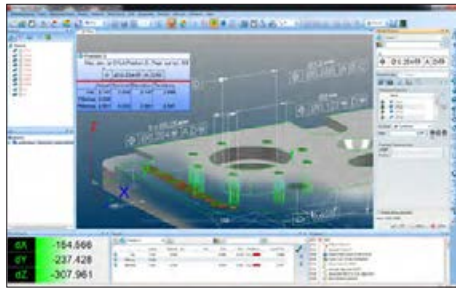
► ACQUISITION

## *Large scale metrology with Metrolog X4.*

- Compatible with all large measuring devices, laser trackers & mobile optical systems.
- Supports all brands and models.
- The multi-connection mode can control several devices to simultaneously measure with reference to all of the measurement results (bundle).
- Takes into account the uncertainties of the instruments and scale factor (temperature variations).
- Tracking and management of raw data.



# Connect and Inspect!



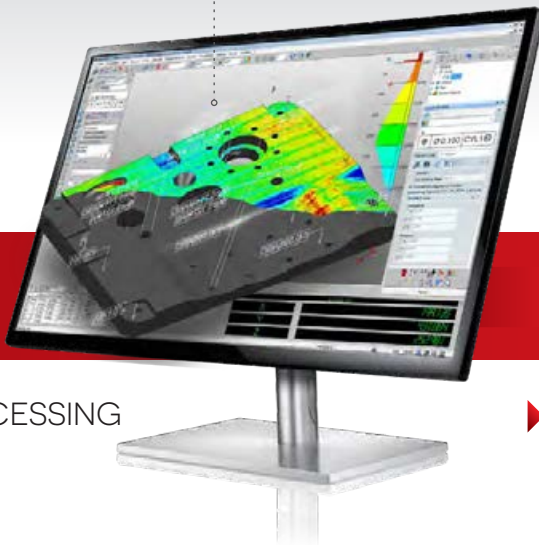
## ***Efficient part programming.***

- Easily create complete part programs.
- Online or offline teach-in available.
- Full process of planned files integration.
- Operator oriented instructions for robust shop floor execution.

## ***Simplifies complex GD&T analysis.***

- Metrolog X4 has a new geometric and dimensional tolerances processing engine for handling the most complex cases in record time.
- Geometric tolerance definition facilitated.
- "Expert" system ensuring the correct evaluation methodology and results.
- Total support for the tolerance evaluation in compliance with the given standard.
- Support for ANSI and ISO standards.
- Certified and recognized solution by the PTB and NIST organisations.

## Embedded treatment in X4



► PROCESSING

► ANALYSIS

## Graphic reports



► REPORTING

## ***High performance: large data set (CAD, point clouds...).***

No more delays and bottlenecks with large volumes of data. The coming years will see exploding amounts of data and processing, whether CAD files or measured point clouds from optical sensors.

Metrolog X4 64-bit architecture uses all available memory and optimization, always pushing the envelope. Unparalleled performance and unparalleled ease of use.

The software architecture provides two key benefits:

- Import and manipulate large size CAD files.
- Import or acquire large point clouds.

## ***Report editor: the best in class.***

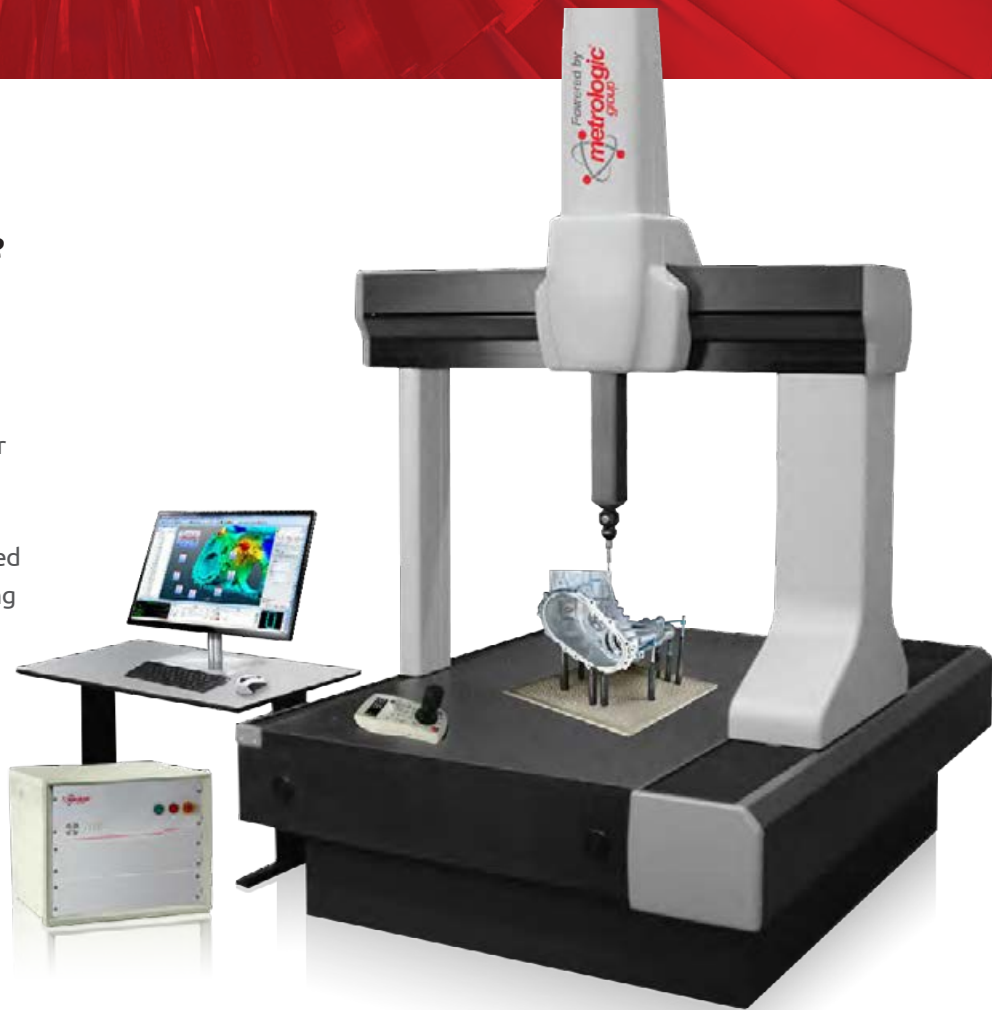
- Powerful report editor allows complete and easy customization.
- Simple and user-friendly interface.
- Create your own report templates adapted to your customer requirements.
- Customize any type of output: assistant, status editor, direct export from the library, etc.
- Export available in many file formats such as .XLS, .CSV, .PDF...



# Universal CMM Controller Retrofit

***"Don't hesitate to upgrade your CMM! You will increase its performance at a very competitive price."***

CMM hardware upgrade and software update have become increasingly popular over the past few years, restoring full performance to a measuring tool whose electronic parts and software are outdated for considerably less money than changing the measuring tool.



## ***Metrologic universal DCC controller upgrade.***

The ME5011 provides enhanced calculation time, machine speed and an overall smoother machine motion.

- Fast: capable of high speed contact-scanning.
- State-of-the-art: developed for optical laser scanning probes.
- Universal: fully compatible with all types and brands of CMM.
- Ergonomic: specific keyboards developed especially for Metrolog software use. Wireless bluetooth keyboards available.
- Reliable: use of proven technologies combined with 35 years of experience.
- Easy: Metrotune software for quick and easy installation of the measurement results (bundle).



## ***Metrologic manual counting box upgrade.***

- 3 axis counting box for any type of manual CMM.
- Any type of encoder.
- Connection to PC via USB.
- Input for touch trigger 3D probe.
- Power supply included.
- Fully compatible with our 3D inspection software.

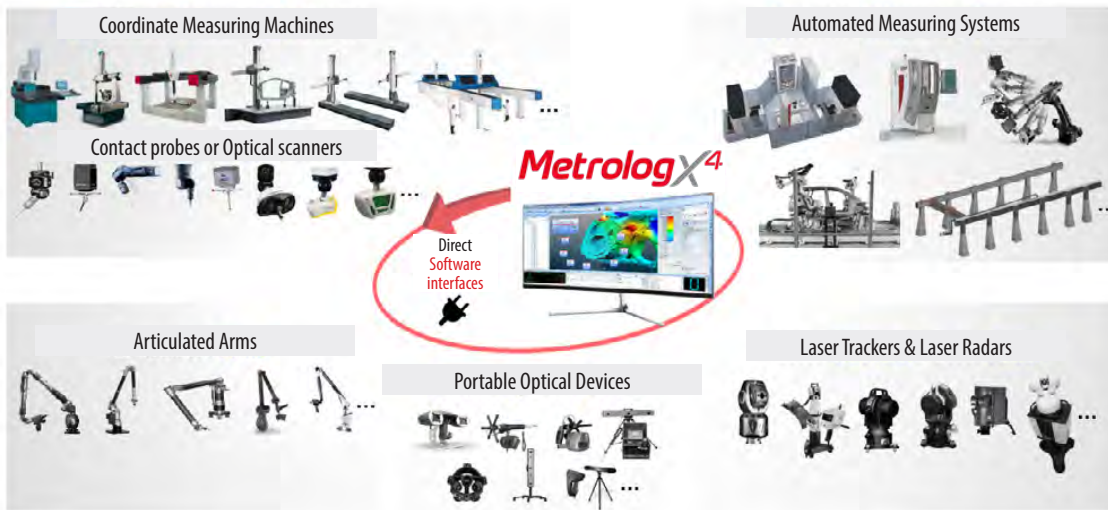


## ***Metrologic operator oriented joystick and keyboards.***

Among all the improvements made to this new single joystick keyboard, here are some of the main advantages:

- Large color LCD screen: better contrast and brightness.
- 16 programmable function keys.
- New menus and quick access for PH10 motorized head.
- Self-test functions.

# A Universal Solution Available on Any Device



**Metrolog X4 Direct Interface Technology** allows you to simply connect over 100 different devices using the existing hardware controllers and native protocols.

Driven by innovation, our development team constantly integrates new systems to provide you with the ultimate measurement software for your existing and upcoming applications.

ANY DATA | ANY TECHNOLOGY | ANY APPLICATION

## Added value app's to maximize your productivity.



### X<sup>4</sup>!-Viewer

- Free Metrolog X4 working session viewer app.
- Collaborate and dynamically exchange your 3D inspection data with your engineering team; facilitate product development by using the new X4 i-Viewer software.
- Share your X4 inspection files with customers, partners or subcontractors; let them visualize your measurement results and data by simply downloading this free application.



### X<sup>4</sup>!-Remote

- With the X4 i-Remote mobile app you can measure while away from your computer.
- You can remotely take control of your X4 software. No need to navigate back and forth to your computer during a measurement session.
- Simply take control of Metrolog X4 at the touch of your fingertips and away from your computer.



### X<sup>4</sup>!-Supervision

- A new revolutionary approach to delivering live inspection results to the shop floor.
- Available in Metrolog X4 and fully compatible with robots as well as CMMs and other Metrolog X4 applications.
- Specifically designed to work on touch screen human interface.
- Available as a standalone station or as an add-on to any existing X4 license.



# Discover Extraordinary 3D Inspection Solutions



**Silma X4:** Exceptionally powerful offline CMM programming and simulation software that includes complete machine & environment simulation with advanced collision detection!

**Metrolog X4 & Silma X4 i-Robot:**  
**Automation**  
Inline robot control & inspection solution based on a high speed acquisition laser or touch scanner mounted on any industrial robot.

**Metrolog X4 V5 and Silma X4 V5:** The only complete software solution for 3D measurement and analysis integrated within the CATIA V5 environment.



## RETROFIT

Manual and automatic CMM update with universal electronic hardware.



## SERVICES

Expertise, control and verification of all types of CMM, manual or automatic.



## TRAINING

Training programs for discovery, development or specialisation.

Find more information about our products and services:

[www.metrologicgroup.com](http://www.metrologicgroup.com)

## Worldwide presence

A comprehensive network of subsidiaries and distributors in over 30 countries.

Metrologic Group specializes in the design and sales of advanced software and electronic solutions dedicated to 3D measurement.

The company also offers the retrofitting of existing CMMs with high performance hardware, calibration services, on-site technical support, maintenance services and training.



Your distributor



**Metrologic Group S.A.S**

Worldwide Headquarters

6 Chemin du Vieux Chêne

Inovallée - 38240 Meylan - FRANCE

Ph: +33 476 043 030

Fax: +33 476 907 571

E-mail: [metrologic@metrologic.fr](mailto:metrologic@metrologic.fr)

